

N.W. 1/4
SECTION 28, T.6N., R.2W., S.L.B. & M.

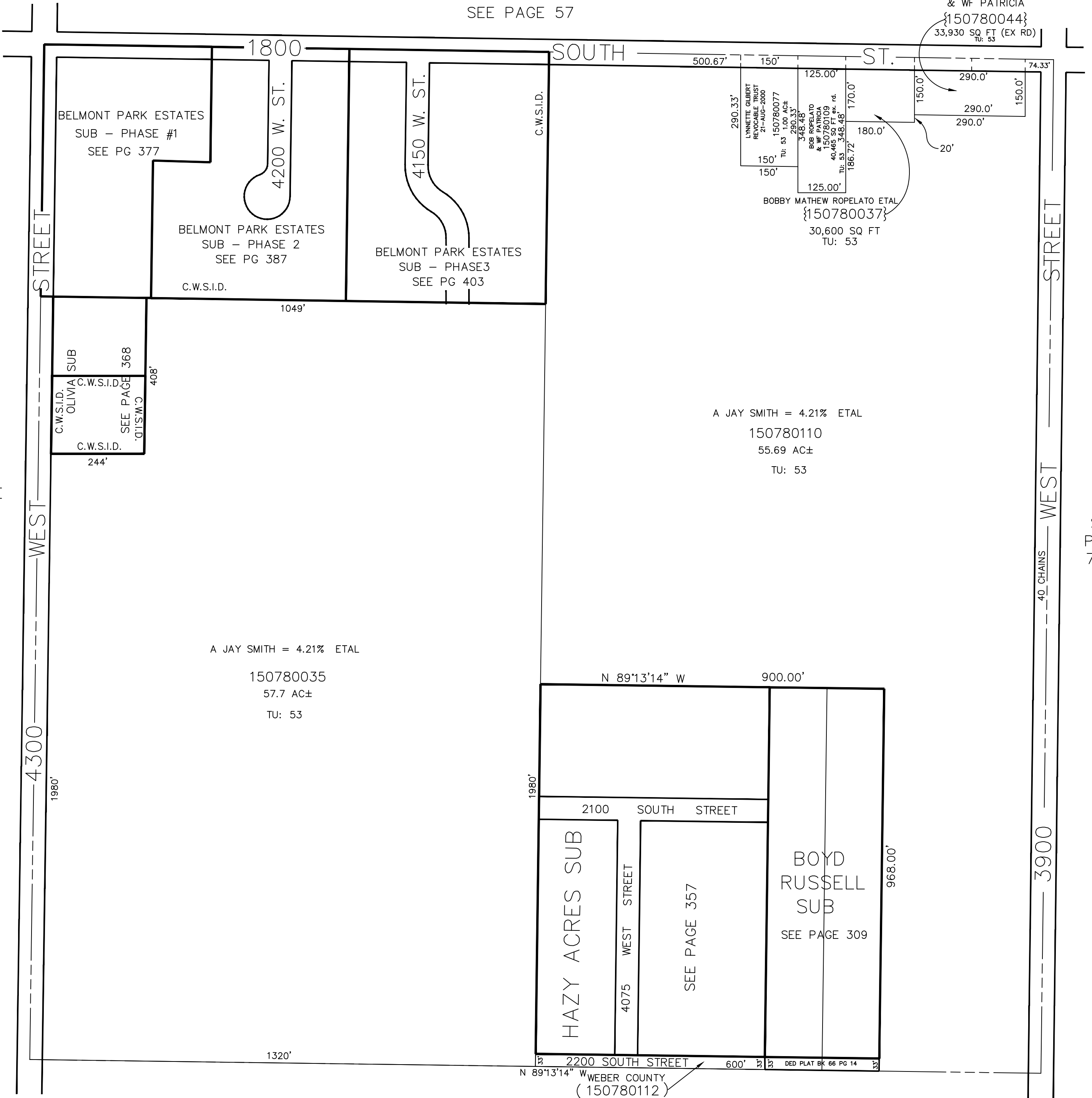
IN WEBER COUNTY

SCALE 1" = 200'

TAXING UNIT: 53,377

SEE PAGE 57

BOB ROPELATO
& WF PATRICIA
{150780044}
33,930 SQ FT (EX RD)
TU: 53



BELMONT PARK ESTATES
SUB - PHASE #1
SEE PG 377

BELMONT PARK ESTATES
SUB - PHASE 2
SEE PG 387

BELMONT PARK ESTATES
SUB - PHASE 3
SEE PG 403

C.W.S.I.D. OLIVIA SUB
C.W.S.I.D. SEE PAGE 368
C.W.S.I.D. SEE PAGE 368
C.W.S.I.D. 244'

A JAY SMITH = 4.21% ETAL
150780110
55.69 AC±
TU: 53

A JAY SMITH = 4.21% ETAL
150780035
57.7 AC±
TU: 53

HAZY ACRES SUB
4075 WEST STREET
SEE PAGE 357
BOYD RUSSELL SUB
SEE PAGE 309

WEBER COUNTY
(150780112)
19,800 SQ FT
TU: 53

SEE PAGE 80

SEE PAGE 78-1

SEE PAGE 78-3